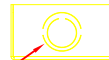
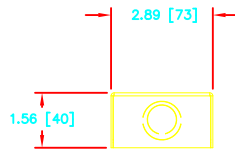
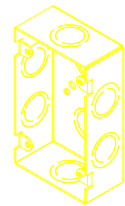
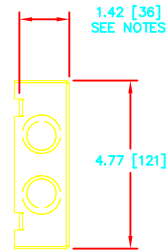


#10-32 Tapped Hole
4 PLCS.



$\frac{3}{8}$ " [13] - $\frac{1}{2}$ " [19]
ECCENTRIC KNOCKOUT
QTY. 8



NOTES:

1. WHEN INSTALLED IN A 1G $\frac{3}{8}$ " MOUNTING PLATFORM THE DEPTH OF THE ASSEMBLY WILL BE 3.14 [79] FROM THE BACK OF THE MOUNTING PLATFORM.
2. WHEN INSTALLED IN A 1G $\frac{1}{2}$ " MOUNTING PLATFORM THE DEPTH OF THE ASSEMBLY WILL BE 3.26 [83] FROM THE BACK OF THE MOUNTING PLATFORM.